



# We Provide All In One Solution



案 会  
内 社

Company profile

We keep pursuing excellence and provide the elevators with best quality to the world.





# Index

## PRODUCTS

New Cabin Dedsign	05	OBH	13
HAL Type	08	Passenger Lift	15
G9 Pitless Elevator	09	Cargo & Bed Lift	17
Machine Roomless	11	Escalator & Moving Walk	18

## DESIGN

Ceiling	19	Operating Panel	21
Handrail	20	Landing	22

## OTHERS

Features	23	Safety	25
Application	24	Function List	27

## LAYOUTS

Passenger Lift	29	GPX	32
OBH	31	Bed Lift	33
Home Lift	32		

### Certificate of Registration

## 会社登録 & 認定







About Us

## 会社概要

JFIは日本の製品を世界中に提供しています。  
 JFIの生産地は日本にあり、日本認定やヨーロッパCE認定など、多くの認定があります。品質を保つために、日本のAMADA製造機器を使用しています。国際貿易を通して、世界各地のエレベーター要望に応じています。

JFI is a renowned company providing its quality products from Japan to Singapore, Southeast Asia, the Middle East, North, Central, South America, and Africa.

JFI has its production base located in Japan. We've been recognized by legitimate authorities around the world and have passed various certifications, including European standard, CE, and relevant Japanese standards. To ensure the best quality, we also adopt Amada machine tools from Japan for manufacturing. Through international marketing strategies, we've successfully achieved the goal of having our elevators seen by people around the world.



〒270-0144 千葉県流山市前ヶ崎599-3  
 599-3, Maegasaki, Nagareyama Shi,  
 Chiba Ken, 270-0144, Japan  
 E-mail : info@fujilift.co.jp  
 TEL : +81-3-45780389

Words from President Ota

## 社長のあいさつ

当社は「日本品質を世界へ」を目的に安全安心なエレベーターを世界へ供給しております。  
 私自身、日本国内で創業45年のエレベーター会社を営んで参りました。その経験と製造会社・メンテナンス会社の協力体制をもって、世界の皆様へ日本品質エレベーター JapanFuji をお届けします。

With "Showing Japanese Quality to the World" as principle, we produce safe, reliable elevators for every country. I myself have been in this business for 45 years in Japan. By the experience and the cooperation of manufacturing and maintenance companies, we will continue providing Japan Fuji elevators with Japanese quality to the whole world.



*Hideki Ota*

President Hideki Ota

# Project Timeline

- 許可します
- 図面
  - インボイス
  - 契約
- Approval
- Drawing
  - Proforma Invoice
  - Contract

## 見積り Quotation

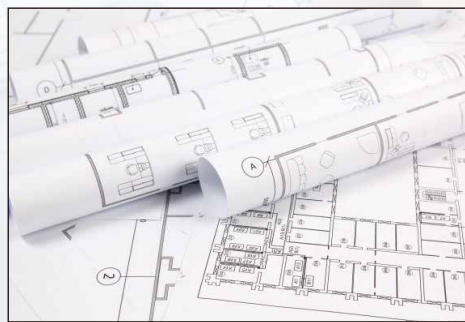


## 許可します Approval



Specs & Drawing  
規格と図面

## 図面 Drawing



## 材料を予約購入 Material Manufacturing

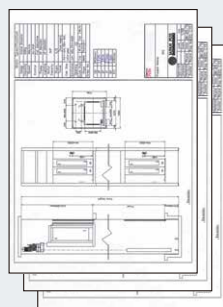


Quotation

- Major Specifications
- Production Specifications
- Detailed Notes and Clarification

見積り

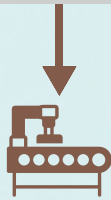
- 主な仕様
- 生産仕様
- 詳しく説明して明らかにするのを包装するのを混合します



Approval Drawings  
製品図面



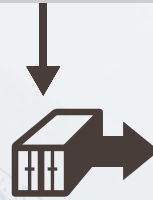
精密製造 Precision Manufacturing



電子メールは商品をご知らせいたします

Notice of Shipment E-Mail  
Notice of Delivery E-Mail

パッケージ Packaging



レーザーは機を加工 Laser Processing Machine



アイレットマシン Turret Punch Press



ひんしつかり Quality Control



コンテナへのローディング Container



出荷品 Shipment



Products

# New Cabin Style

Product Model

## SHS002

### 仕様 Specification

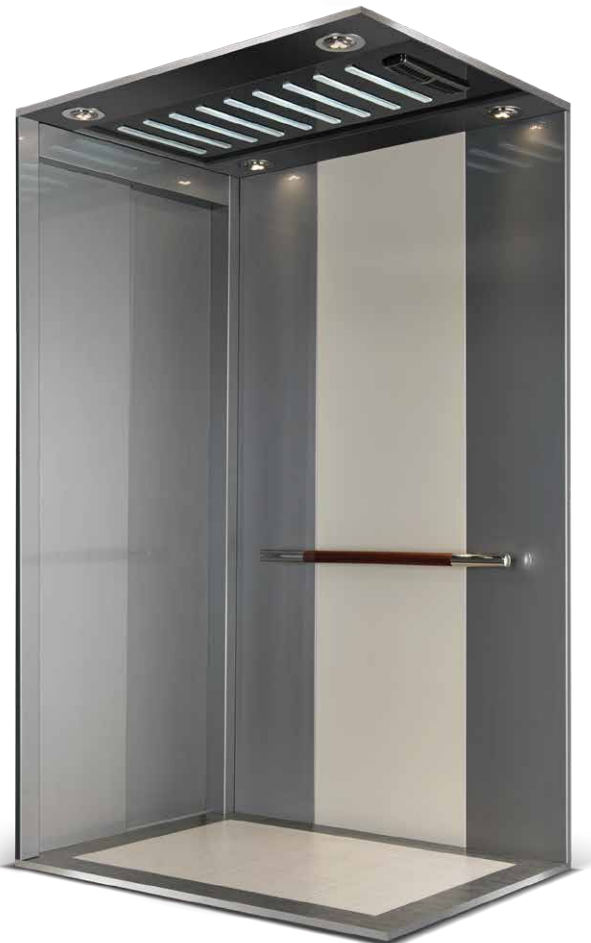
Car Wall	<ul style="list-style-type: none"> <li>■ Front Pattern Steel</li> <li>■ Left Pattern Steel</li> <li>■ Right Pattern Steel</li> <li>■ Rear Pattern Steel + Mirror Etching Stainless Steel</li> <li>■ Handrail Mirror Stainless Steel + Wood Grain</li> </ul>
Lighting	<ul style="list-style-type: none"> <li>■ LED</li> </ul>
Ceiling	<ul style="list-style-type: none"> <li>■ Pattern Steel</li> </ul>
Landing Door	<ul style="list-style-type: none"> <li>■ Pattern Steel</li> </ul>
COP	<ul style="list-style-type: none"> <li>■ Prestige (Mirror Glass)</li> </ul>
Floor	<ul style="list-style-type: none"> <li>■ PVC</li> </ul>



Point 1 | エッチングミラー背板  
Mirror Etched Rear Plate



Point 2 | 空気入れ替えファン  
Air Vent with Fan



乗場デザイン Landing Door

HOP / COP



FHP018



FCP004



# New Cabin Style

Product  
Model

## SHS004

### 仕様 Specification

Car Wall	■ Front	Hairline Stainless Steel
	■ Left	Pattern Steel + Mirror Black Stainless Steel
	■ Right	Pattern Steel + Mirror Black Stainless Steel
	■ Rear	Pattern Steel + Mirror Black Stainless Steel
	■ Handrail	Mirror + Wood Grain
Lighting	■ LED	
Ceiling	■ Pattern Steel + Mirror Black Stainless Steel	
Landing Door	■ Pattern Steel	
COP	■ LCD Color screen + Touch Botton	
Floor	■ PVC	



Point 1 シーリングライト  
Ceiling Light



Point 2 空気入れ替えファン  
Air Vent with Fan



乗場デザイン Landing Door

HOP / COP



FHP019



FHP020



FCP014



Products

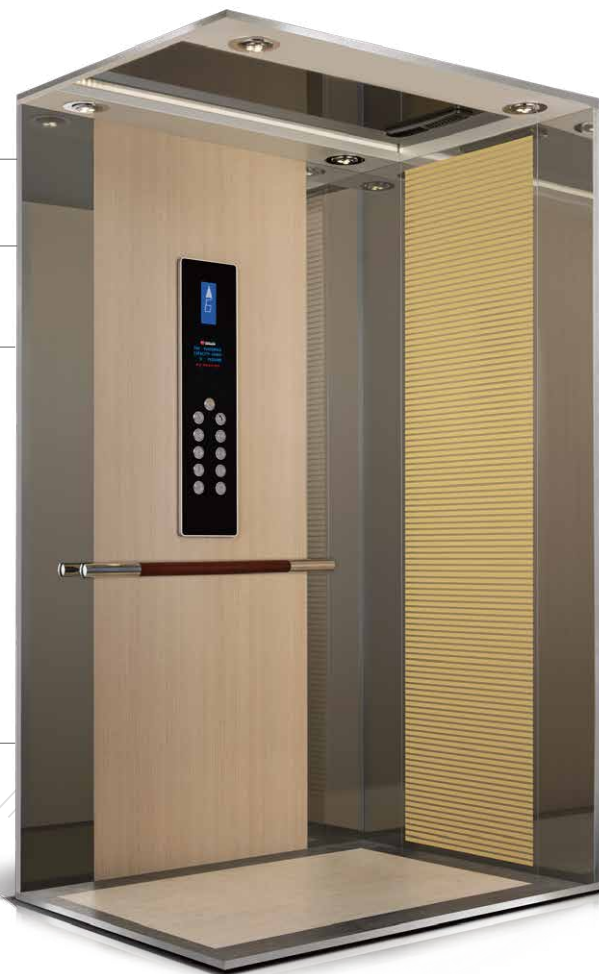
# New Cabin Style

Product Model

## SHS006

### 仕様 Specification

Car Wall	<ul style="list-style-type: none"> <li>■ Front Hairline Stainless Steel</li> <li>■ Left Mirror Stainless Steel + Pattern Steel</li> <li>■ Right Mirror Stainless Steel + Pattern Steel</li> <li>■ Back Mirror Stainless Steel + Gold Stripe Etching Stainless Steel</li> <li>■ Handrail Mirror Stainless Steel + Wood Grain</li> </ul>
Lighting	■ LED
Ceiling	■ Pattern Steel
Landing Door	■ Pattern Steel
COP	■ Standard(Mirror Black Acrylic + LCD Single-Color Screen + Button)
Floor	■ PVC



ゴールドダイヤモンド

ストライプステンレス

Point 1 Gold Striped Stainless Steel



扇風機の空気を通す口

Point 2 Air Vent with Fan



乗場デザイン Landing Door

HOP / COP



FHP021



FCP014





# Aluminum Structure

Product  
Model

## HAL TYPE

### 仕様 Specification

Ceiling	■ Mirror Stainless Steel + Pattern Steel
Car Wall	■ Mirror Stainless Steel + Pattern Steel + Glass
Floor	■ PVC Anti-Sliding Floor Tiles
COP	■ FCP-003

※ Material above can be customized

### 製品の特徴 Features

- No need for concrete shaft structure.  
Saving owner's cost.
- Easy and quick installation for new and old houses.
- Minimum inconvenience to home life.
- Little space required.
- Easily carrying while moving.
- Different from common steel plate, the decent coating of aluminum alloy can easily match the interior design.
- By replacing the exterior aluminum plates with glass, the elevator can be converted into observation type which looks more luxurious.



### 施工事例 Reference Project



Products

# Pitless Elevator

G9-S

Product Model

## G9 PITLESS ELEVATOR

### I-TOUCH System



Status and Records



Instructions



Home



Maintenance



Phone and Alarm



Lighting Adjustment



### 仕様

### Specification

Car Wall

- Rose Gold Plated Vibration Stainless Steel
- Mirror Stainless Steel + Glass

Handrail

- Leather

Lighting

- LED

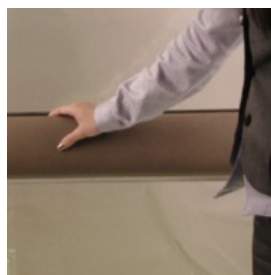
COP

- LCD (I-Touch Type)

Floor

- PVC Anti-sliding Floor Tiles

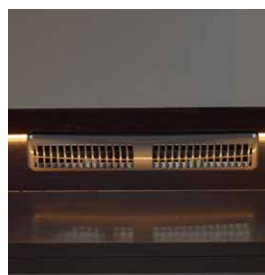
Point 1 | かわ手すり  
Leather Handrail



Point 2 | 間接照明で温かい雰囲気を出す  
Floor Decorating Lights



Point 3 | 空気入れ替えファン  
Air Vent with Fan



### 乗場デザイン Landing Door

### HOP



Transparent Colorless Glass



Transparent Darkened Glass



Non-Transparent Painted Glass



FHP019



FHP020

### シャフトデザイン(HAL) Aluminum Shaft Design

RD146

木目調(ライトウッド)  
Light Wood Grain  
(Transfer Printed)

R116

木目調(ダークウッド)  
Dark Wood Grain  
(Transfer Printed)

780-49098FITM

ダークブラック  
Dark Ink  
(Painted)

780-49001IM

シャンパンゴールド  
Champagne Gold  
(Painted)



# A Perfect Solution For 2F-5F Home Lifts.



G9-EA



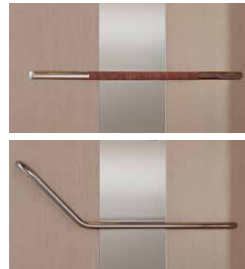
G9-EB



## 仕様 Specification

Car Wall	■ Pattern Steel + Mirror Stainless
Handrail	■ Stainless Steel
Lighting	■ LED
COP	■ LCD (I-Touch Type)
Floor	■ PVC Anti-sliding Floor Tiles

Point 1 手すり仕様 Handrail Type



Point 2 シーリングライトと間接照明 Ceiling with Direct Lighting



## 乗場デザイン Landing Door



Dark Wood Grain Panel with Strip Windows



Dark Wood Grain Panel with Grid Windows

No Pit Required  
Other Elevator Pit(1300mm)

Products

# Machine Roomless

Product Model

## GPX-A

### 仕様 Specification

Ceiling	■ Fashionable Type
Lightings	■ Energy Saving LED
Car Operating Panel	■ Plated Black
Hall Operating Panel	■ Plated Black
Handrail	■ Hairline Stainless Steel
Cabin Wall	■ Pattern Steel
Landing Door	■ Pattern Steel
Cabin Door	■ Pattern Steel
Flooring	■ PVC Tiles



Point 1 機械室なし Machine Room Less Elevator



Point 2 お手入れが簡単 Easy to Clean Surface



乗場デザイン Landing Door

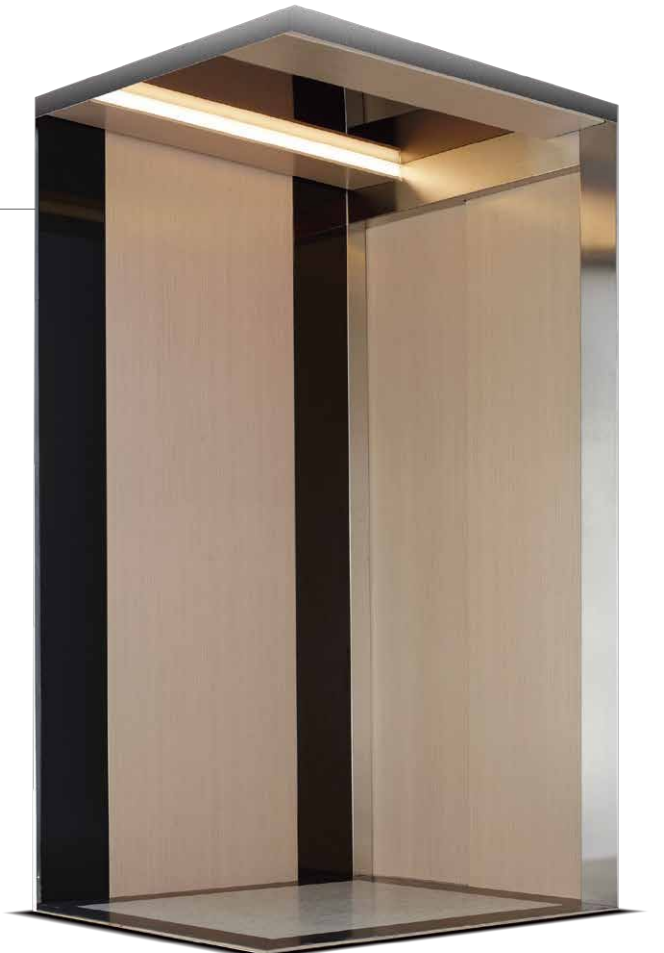
HOP / COP



FHP021



FCP006





# Machine Roomless

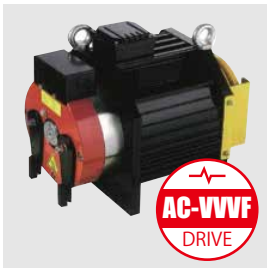
Product  
Model

## GPX-B

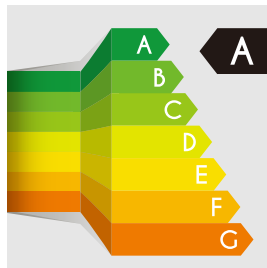
### 仕様 Specification

Ceiling	■ Stylish Type
Lightings	■ Energy Saving LED
Car Operating Panel	■ Plated Black
Hall Operating Panel	■ Plated black
Handrail	■ Hairline Stainless Steel
Cabin Wall	■ Pattern Steel
Landing Door	■ Pattern Steel
Cabin Door	■ Pattern Steel
Flooring	■ PVC Tiles

Point 3 PMギアレス  
Gearless Motor



Point 4 エネルギー効率A級  
Class A Energy Efficiency



乗場デザイン Landing Door

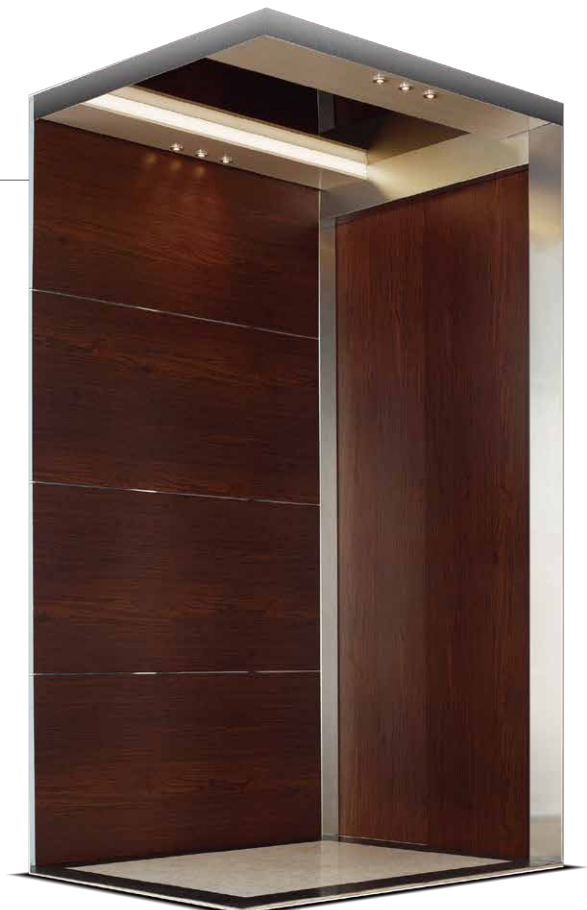
HOP / COP



FHP021



FCP016



Products

## Panoramic Lift

One-Piece Perfect Circular  
Transparent ElevatorProduct  
Model

OBH

Point 1 | 視野角は360度  
360 Round Glass View

## 仕様 Specification

Ceiling	■ Star-Type
Car Wall	■ Mirror Titanium with Glass
Floor	■ Marble Floor Tiles
COP	■ FCP-001 (Full Length)

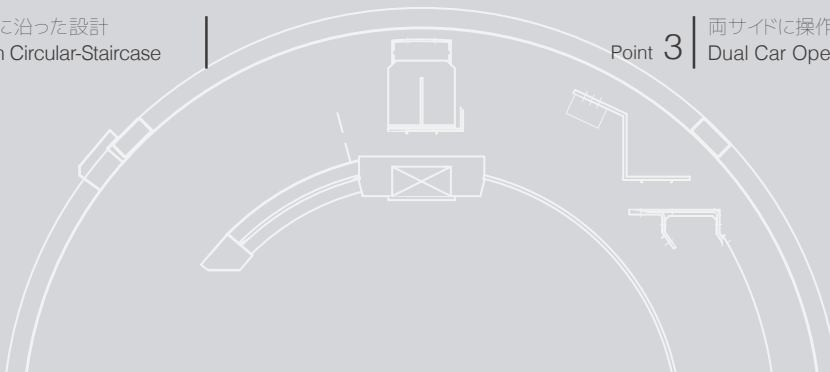


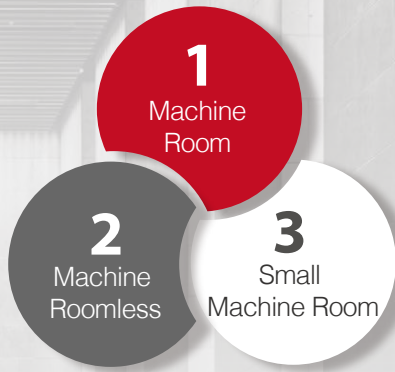
# Luxurious Integrated-Designed



Point 2 | 円型の階段に沿った設計  
Fits Well with Circular-Staircase

Point 3 | 両サイドに操作盤の設計  
Dual Car Operating Panel





With **Machine Roomless Technology**, all equipments are installed inside hois tway. No space needed for machine room, which won't rest rain the design of building.

- Cost s aving on machine room.
- Short construction time.
- Limit on OH height is solved.
- Replace lift of hydraulic type.
- Noiseless and no vibration.
- Energy S aving Design.
- Feature with Earthquake Sensor (Seismic Sensor).
- Location of traction machine varies from design and customer's request.



VVVF Door Operator System



Product Model **PAINTED**

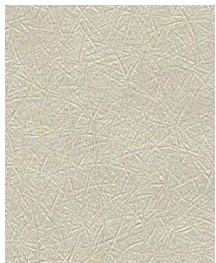


仕様 Specification

Ceiling	■ Painted Steel
Car Wall	■ Painted Steel
Floor	■ PVC Anti-Sliding Floor
COP	■ FCP-002

Cabin Wall

**PATTERN STEEL MATERIAL**



LNA-14



LC-14



LW-6920



LNA-15



LNA-24



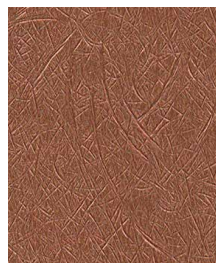
LNW-1



LG-01



LW-9284



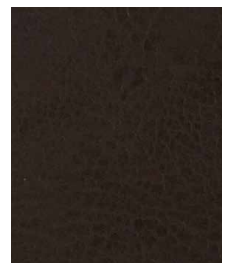
LNA-18



LG-04



LNW-24



LC-108



# Cabin Enclosure

## STEEL

Product Model **PATTERN STEEL**

Product Model **HAIRLINE STAINLESS STEEL**



仕様 Specification

Ceiling	■ Pattern Steel
Car Wall	■ Pattern Steel
Floor	■ PVC Anti-Sliding Floor
COP	■ FCP-002



仕様 Specification

Ceiling	■ Hairline Stainless Steel
Car Wall	■ Hairline Stainless Steel
Floor	■ Checkered Stainless Steel Plate
COP	■ FCP-002

Floor Material **PVC Tile**



X-7223



X-7210



X-7211



X-859



X-853



X-860



X-7223



X-860+X-859

Products

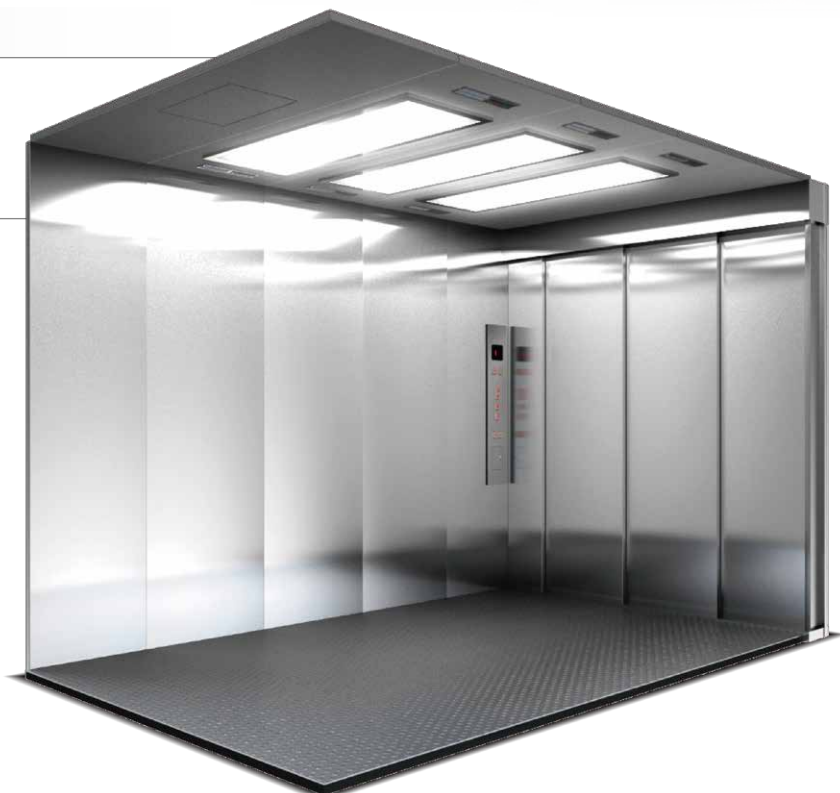
# For Factory and Hospital

Product Model

## CARGO LIFT

### 仕様 Specification

Ceiling	■ Hairline Stainless Steel
Car Wall	■ Hairline Stainless Steel
Floor	■ Checkered Stainless Steel Plate
COP	■ FCP-003



### Disable HOP / COP



FCP005



FHP022

Product Model

## BED LIFT

### 仕様 Specification

Ceiling	■ ECL-502 ECL-503 ECL-504 (Standard) ECL-501 (Optional)
Car Wall	■ Pattern Steel
Floor	■ PVC Anti-Sliding Floor Tiles
COP	■ FCP-003 + FCP-005

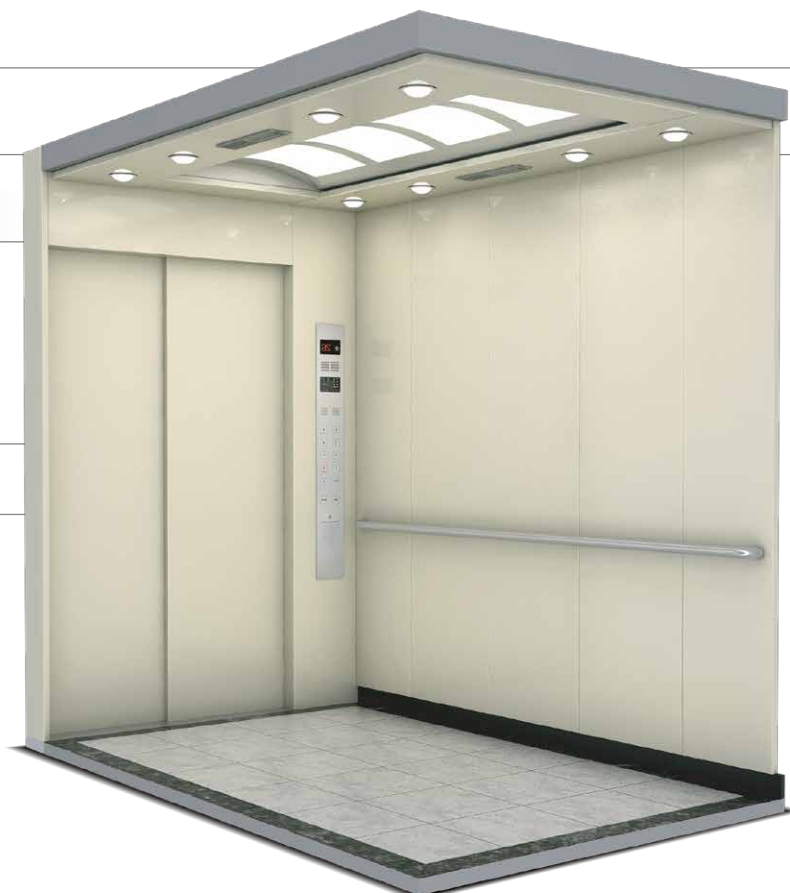
### 天井仕様 Ceiling



ECL-502 (Standard) ECL-503 (Standard)



ECL-504 (Standard) ECL-501 (Optional)







Cabin  
Design

## Ceiling Style

Parts

## CEILING

## スタンダード Standard

**ECL-101**Chinese Style Steel Sheet  
Coating**ECL-102**Star-Type Steel Sheet  
Coating**ECL-103**Steel Sheet Coating of  
Shooting Star Type**ECL-104**Steel Sheet Coating of  
Round-Spot

## オプション Optional

**ECL-201**

Green Forest Type

**ECL-202**

Red Maple Type

**ECL-203**

Blue Snowy Type

**ECL-204**

Starry Night Type

**ECL-205**

Blue Breeze Type

**ECL-301**

Cross Type Arc Shape Sheet

**ECL-302**

Stripe Type Arc Shape Sheet

**ECL-303**

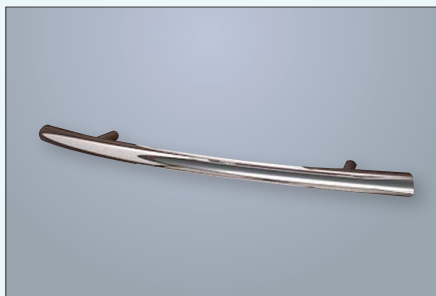
Grid Type Arc Shape Sheet

# Handrail Type

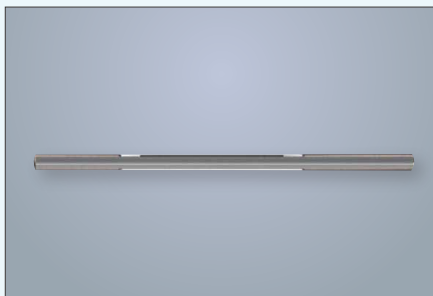
Parts

## HANDRAIL

ステンレス製 Stainless Steel



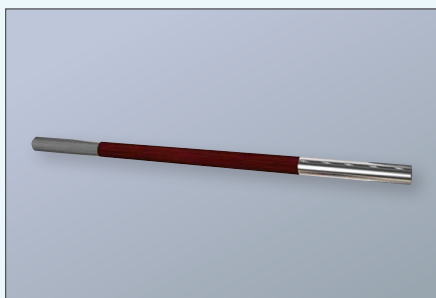
Luxurious Type



Single Tube Stainless Steel Type



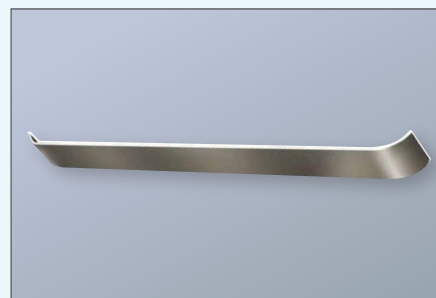
L Type



Prestige Type

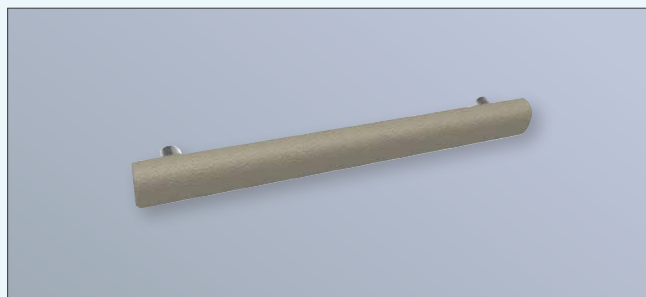


Round Log and Stainless Steel Composite Type

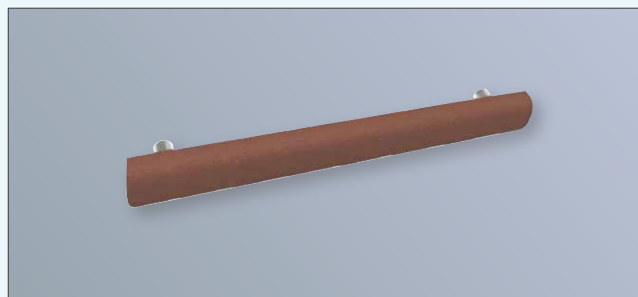


Flat Type

革製 Leather



Gray Leather Type



Brown Leather Type



Cabin Design

# Operating Panel



FCP015-2

FCP001

FCP002

FCP003

FCP014

FHP001

FHP003

FHP002

FHP022

Cabin Design

# Landing Door



## Part STANDARD



LSE-01



LSE-02



LSE-03



LSE-04

## Part GLASS



LSE-005



LSE-006



LSE-007

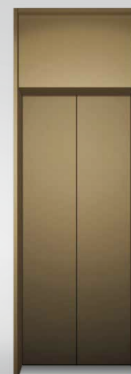
## Part DOOR JAMB



Narrow Door Jamb



Wide Door Jamb



Transom

Function

# Features Introduction

主な機能一覧表 Features

スタンダード Standard

オプション Optional

タッチスクリーン操作  
Touch Panel

**I-TOUCH**

色を調整可能な照明  
Lighting Adjustment

**ADJUSTABLE**

空間を大きく  
Extended Cabin Size

**READY FOR DISABLED OR WHEEL-CHAIR**

Notes : Wheelchair size could be variety, please check to your local vendor.

マルチビームセンサー  
Safety Door Sensor

LEDライト  
Full LED Lighting

**FULL LED**

エネルギー効率  
Certified Energy Efficiency

大きな呼びボタン  
User-Friendly Patent Design

**BIG BUTTON**

乗り心地よい速度  
Smooth and Comfort

**SPEED**

5TH FLOOR

17.5 METER

Approx. 19 sec

むていでんでんげんそうち  
UPS Uninterruptible Power System

**ARD**  
AUTO RESCUE DEVICE

SMSスマートメンテナンスシステム

Smart Maintenance System





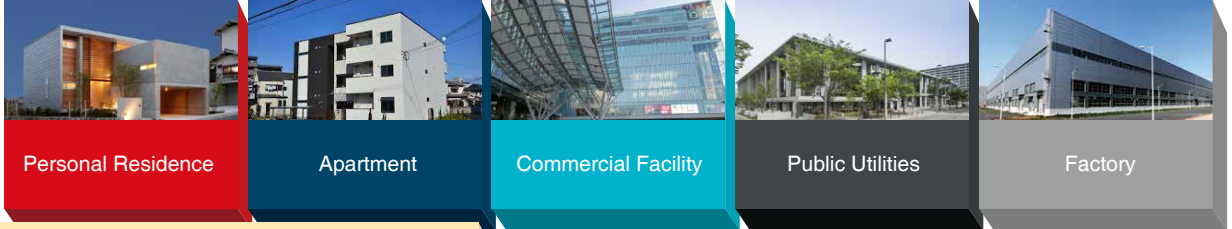
Location

# Application for the Building

製品表 Product Application

P.XX ← 対応商品の概要は、ページを参照ください。  
For the summary of the corresponding product, please go to page Number.

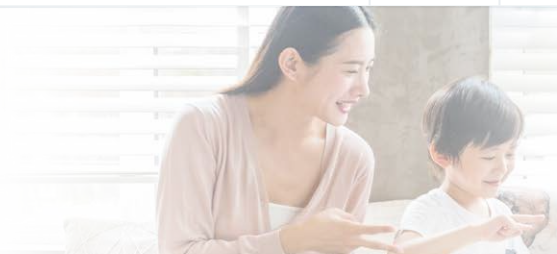
建物のスタイル  
Types of buildings



Standard Type	For Home	SHS002 (P.05 ←) HAL (P.08 ←) SHS004 (P.06 ←) G9 (P.09 ←) SHS006 (P.07 ←) GPX (P.11 ←)			
	Building		SHS002 (P.05 ←) GPX (P.11 ←) SHS004 (P.06 ←) OBH (P.13 ←) SHS006 (P.07 ←)		
	For Goods				CARGO LIFT (P.17 ←)
Customized Type	Commercial Building	SHS002 (P.05 ←) GPX (P.11 ←) SHS004 (P.06 ←) OBH (P.13 ←) SHS006 (P.07 ←)			
	Factory Use		CARGO LIFT (P.17 ←)		CARGO LIFT (P.17 ←)
	Hospital Use			BED LIFT (P.17 ←)	

Safety

# Safety Features



Safety Detector

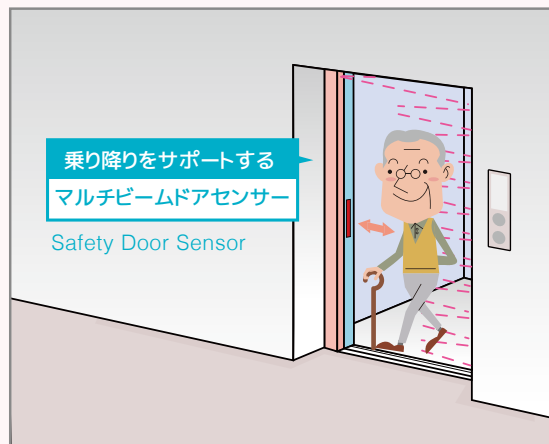
## TWO IN ONE SAFETY EDGE

スタンダード Standard

BEFORE



AFTER



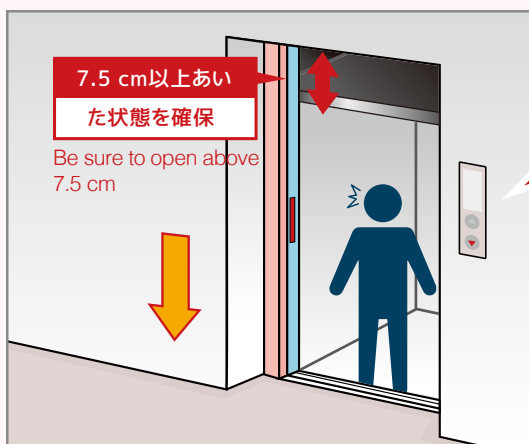
エレベーターのドア上下1.8m間に40本の赤外線を発光。1本でも赤外線センサーを遮ると、ドアの先端に設けられた安全装置（セーフティシュー）を手や体で押さえなくてもドアを反転するシステムです。

Double protection with mechanical safety edge plus infrared light curtain.(2 in 1)

Safety Detector

## UCMP (Unintended Car Movement Protection)

オプション Optional



STOP!



▼ Elevator Moving Download

▲ Elevator Moving Upward

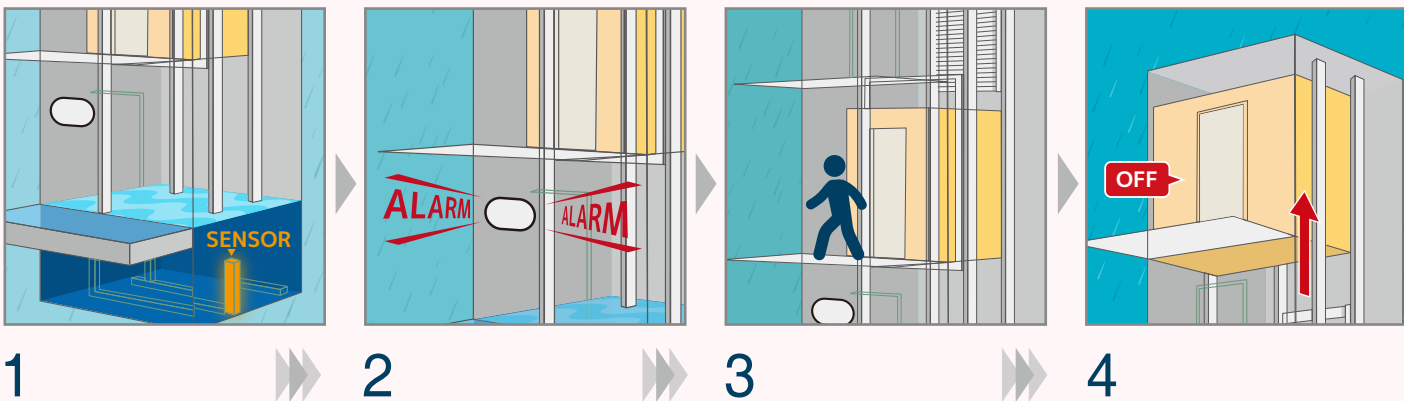
新安全基準に対応した、戸開走行保護装置を採用。ドアが開いたままエレベーターが昇降しないよう、自動的にエレベーターを制止します。UCMP回路と二重系ブレーキとの連携で、故障時にも安全を守ります。

When UCMP detects abnormal car movement more than 7.5 cm, it will instantly activate the brake to stop the car.

# Safety Features



## Safety Detector FLOOD DETECTOR オプション Optional

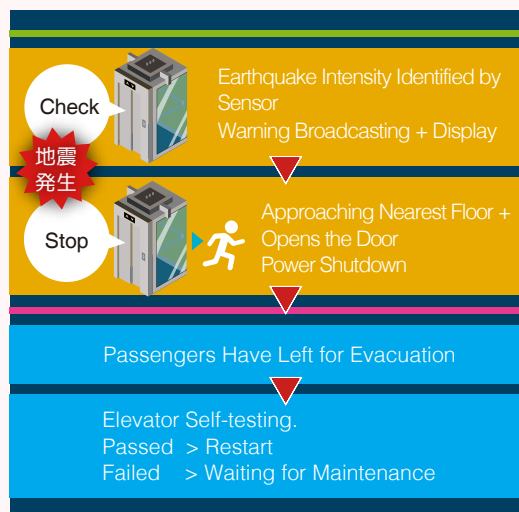
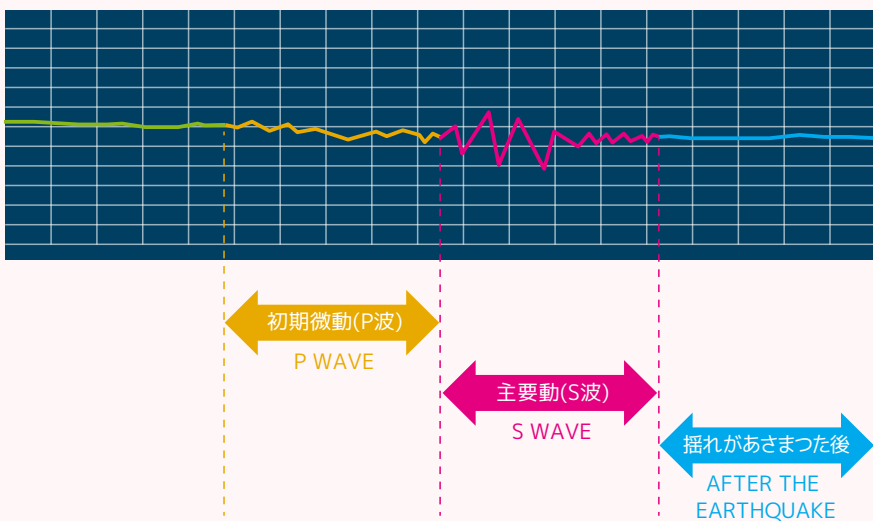


- 1 Sensor sends signals to broadcaster while detecting flood in the pit.
- 2 Broadcaster sounds the alarm and sends signals to controller.
- 3 Controller drives the car to safe floors.
- 4 Car moves second top floor and opens the door, then shut off for safety concern.

ピットの冠水を検知すると、エレベーターが運転を休止します\*。\*冠水検知時、エレベーターが最下階に停止している場合は、退避階に運転後休止します。

When flood detector detects water inside the pit, it'll move the elevator to the 2nd highest floor.

## Safety Detector EARTHQUAKE SENSOR オプション Optional



地震で休止したエレベーターを自動で診断。異常がなければ運転を再開させ、地震時のエレベーター休止時間を短く抑えます。

When earthquake sensor detects P waves & S waves, the elevator will be directed to the nearest floor for evacuation.



Function

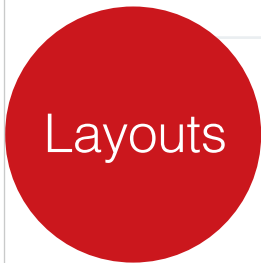
# Standard Function

Feature	Description
1. Automatic Levelling	Auto levelling and re-levelling, ensuring level between car and landing door sill.
2. Emergency Car Lighting	Emergency in car lighting during power failure of the main building power supply.
3. Door Safety Detector	A self test feature that monitor door safeties upon switching from inspection to automatic mode.
4. False Call Cancelling	Cancelling registered call at the Car Operating Panel (COP) by double tapping registered floor button.
5. Energy Conservation	Lift inverter goes into sleep mode together with light and fan within the car will be switched off automatically after a pre-determined period of time, after answering the last call.
6. Main Floor Parking	Lift will return to main floor (pre-determined) after last registered call.
7. Door Hold	Extending door opening time by pressing "Door Open" and "Call Button" on the Car and Hall Operating Panel respectively.
8. Door Nudging Feature	If an obstacle prevents the door from closing, the door will repeatedly open and close until the object is removed.
9. Overload Weighing Device	Overload safety device that render the lift to be inoperative and an activated alarm.
10. Anti-Nuisance	Registered calls will be cancelled in the event that the load is lesser than expected within the lift car.
11. Car Reverse Direction	Reverse direction calls will be cancelled upon completion of the last registered call of the same direction.
12. Re-Leveling Function	Auto re-leveling in a low speed when a car stops between floors due to malfunction.
13. Car Door Safety Edge	Mechanical safety device in addition to lift curtain sensor.
14. Emergency Intercom System	Emergency communication device with someone outside the lift.

Function

# Optional Function

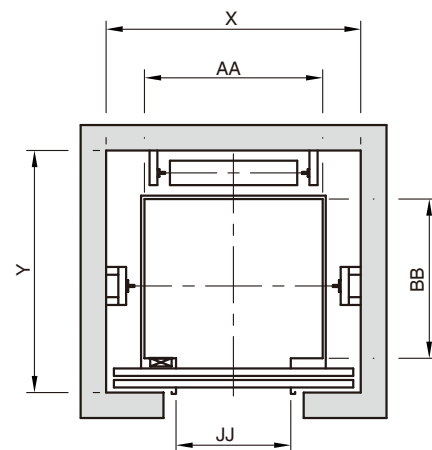
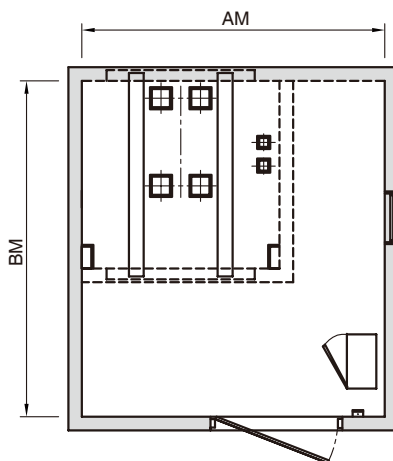
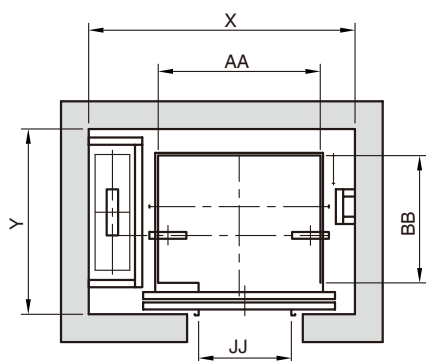
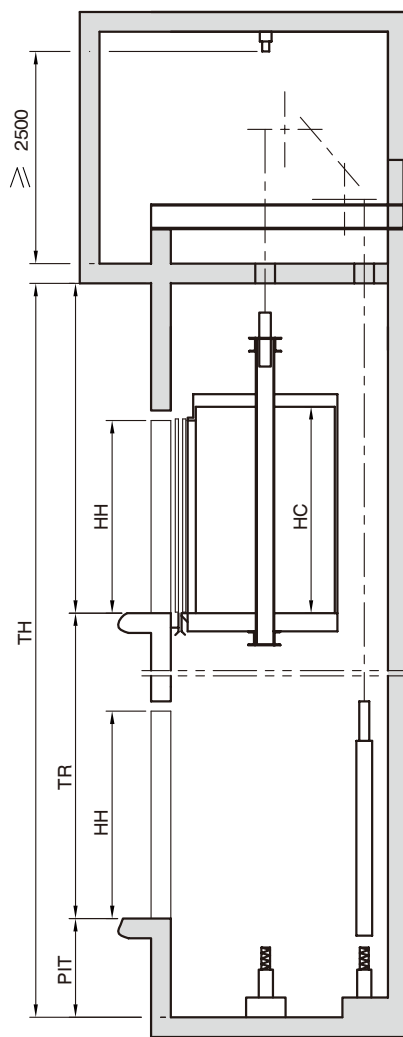
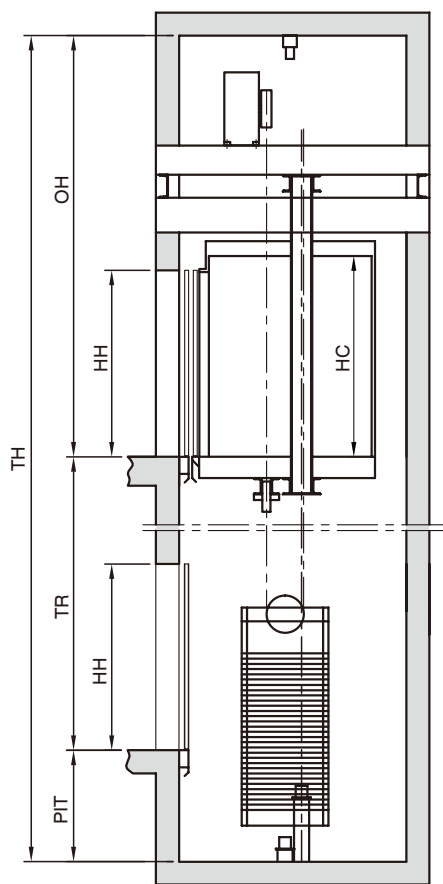
Feature	Description
1. Automatic Fault Logging	Provide comprehensive fault data on recent breakdowns (up to 20 fault tracking).
2. Manual Operation	Switching the automatic lift car operation to manual mode.
3. Automatic Rescue Device (ARD)	An emergency power to bring the lift to nearest adjacent landing during building power failure.
4. Seismic Detector	Returning of lift car to the nearest landing for evacuation upon the detection of earthquake.
5. Card / Bio-Matrix	Advance lift access control by means of fingerprint or access card system.
6. Global System for Mobile Communication (GSM)	Automatic GSM notification system in the event of breakdown or main building power failure.
7. Remote Monitoring Function	Real time elevator monitoring system via 3G network.
8. Supervisory Panel	On site monitoring of lift (s) operation status.
9. Security Code Call	Enabling person with password to access specific floors.
10. Voice Synthesizer	Lift car announcement system.
11. Parking Mode	Lift goes into energy conservation mode by means of a key switch to disable all Hall Call Panels.
12. Non-Service Floor	Lift will not serve this pre-determined floor.
13. Priority Floor	Priority will be given and the elevator will serve this floor first before other registered call (s).
14. VIP Priority Service	VIP calling service at specific floor by means of access control system.
15. Door Infra-Red Sensor	Multi-beam safety curtain sensor fitted on the lift car door.
16. Infrared Curtain	Optical sensor detecting obstacles along the doorway and prevent elevator door from closing.
17. 2 In 1 Safety Door Edge	An enhanced door safety feature that combines both infra-red and mechanical safety edge.
18. Extended Door Hold	Extend door opening time for greater convenience with additional button on Car Operating Panel.
19. Car Arrival Chime	Lift car arrival chime upon arrival of desired floor.
20. Hall Arrival Chime	Audible chime upon the arrival of lift at the particular floor.
21. Hall Arrival Lantern	Arrival lantern installed at lobby will lit up upon arrival of lift.
22. Fire Return Service	Return of lift to designated level for evacuation in the event that the fire alarm is activated.
23. Fireman Operation	Elevator return to designated floor with door remained open for fireman operation.
24. Group Control System	Capable of controlling up to 8 elevators that manage traffic flow efficiently hence reducing waiting time during peak hours.
25. Selective Collective Automatic Operation	Answering of relevant landing call (s) in the direction of travel.
26. Automatic Floor Support	Assigning of alternate car to serve call that is not answered by the primarily assigned car in time.
27. Overall Independent Lift Standby Function	Elevator cars distributed to standby at different floors that effectively reduces waiting time.
28. Peak Service	Designated floor will be given priority during peak hours.



# Passenger Lift Construction Information

エレベーター寸法図 (機械室なし)  
Construction Drawing (Machine Roomless)

エレベーター寸法図 (機械室あり)  
Construction Drawing (Machine Room)



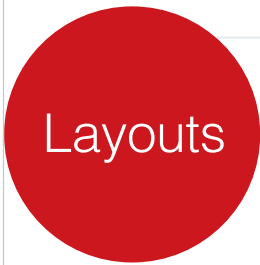


# Passenger Lift Construction Information

## エレベーター寸法表 Specifications

TYPE	CAPACITY	SPEED	DOOR OPEN	ENTRANCE DIMENSION		CAR INTERIOR DIMENSION			HOISTWAY		MACHINE ROOM	
	(KGS)	m/min	TYPE	JJ	HH	AA	BB	HC	X	Y	AM	BM
P	450	45-60	CO	800	2100	1400	850	2300	1750	1450	2000	2900
	550	45-105	CO	800	2100	1400	1030	2300	1750	1590	2000	3100
	600	45-105	CO	800	2100	1400	1100	2300	1750	1660	2000	3200
	700	45-105	CO	800	2100	1400	1250	2300	1750	1810	2000	3400
	750	45-105	CO	800	2100	1400	1350	2300	1750	1910	2000	3500
	820	45-105	CO	800	2100	1400	1400	2300	1750	1960	2000	3600
	900	45-105	CO	900	2100	1600	1350	2300	2100	1930	2500	3500
	1000	45-105	CO	900	2100	1600	1500	2300	2100	2080	2500	3700
	1150	45-105	CO	1100	2100	2000	1350	2300	2500	2100	2900	3800
	1350	45-105	CO	1100	2100	2000	1500	2300	2500	2250	2900	4100
1600	45-105	CO	1100	2100	2000	1750	2300	2500	2500	2900	4500	
EML-P	450	45-60	CO	800	2100	1400	850	2300	1800	1500		
	550	45-105	CO	800	2100	1400	1030	2300	1800	1700		
	600	45-105	CO	800	2100	1400	1100	2300	1800	1750		
	700	45-105	CO	800	2100	1400	1250	2300	1800	1950		
	750	45-105	CO	800	2100	1400	1350	2300	1800	2050		
	820	45-105	CO	800	2100	1400	1400	2300	1800	2100		
	900	45-105	CO	900	2100	1600	1350	2300	2100	2100		
	1000	45-105	CO	900	2100	1600	1500	2300	2100	2250		
	1150	45-105	CO	1100	2100	2000	1350	2300	2600	2200		
	1350	45-105	CO	1100	2100	2000	1500	2300	2600	2350		
1600	45-105	CO	1100	2100	2000	1750	2300	2600	2600			
EMS-P	450	45-60	CO	800	2100	1400	850	2300	1750	1450	1750	1450
	550	45-105	CO	800	2100	1400	1030	2300	1750	1590	1750	1590
	600	45-105	CO	800	2100	1400	1100	2300	1750	1660	1750	1660
	700	45-105	CO	800	2100	1400	1250	2300	1750	1810	1750	1810
	750	45-105	CO	800	2100	1400	1350	2300	1750	1910	1750	1910
	820	45-105	CO	800	2100	1400	1400	2300	1750	1960	1750	1960
	900	45-105	CO	900	2100	1600	1350	2300	2100	1930	2100	1930
	1000	45-105	CO	900	2100	1600	1500	2300	2100	2080	2100	2080
	1150	45-105	CO	1100	2100	2000	1350	2300	2500	2100	2500	2100
	1350	45-105	CO	1100	2100	2000	1500	2300	2500	2250	2500	2250
1600	45-105	CO	1100	2100	2000	1750	2300	2500	2500	2500	2500	

TYPE	ITEM	SPEED			
		45m/min	60m/min	90m/min	105m/min
P	OH(mm)	4200(4000)	4400(4100)	4600(4200)	4800(4300)
	PIT(mm)	1250(1350)	1550(1500)	1850(1800)	2150(1950)
EML-P	OH(mm)	3900(4000)	4100(4100)	4300(4200)	4500(4300)
	PIT(mm)	1250(1500)	1550(1600)	1800(1800)	2100(1950)
EMS-P	OH(mm)	5700(5500)	5900(5600)	6100(5700)	6300(5800)
	PIT(mm)	1250(1350)	1250(1600)	1850(1800)	2150(1950)

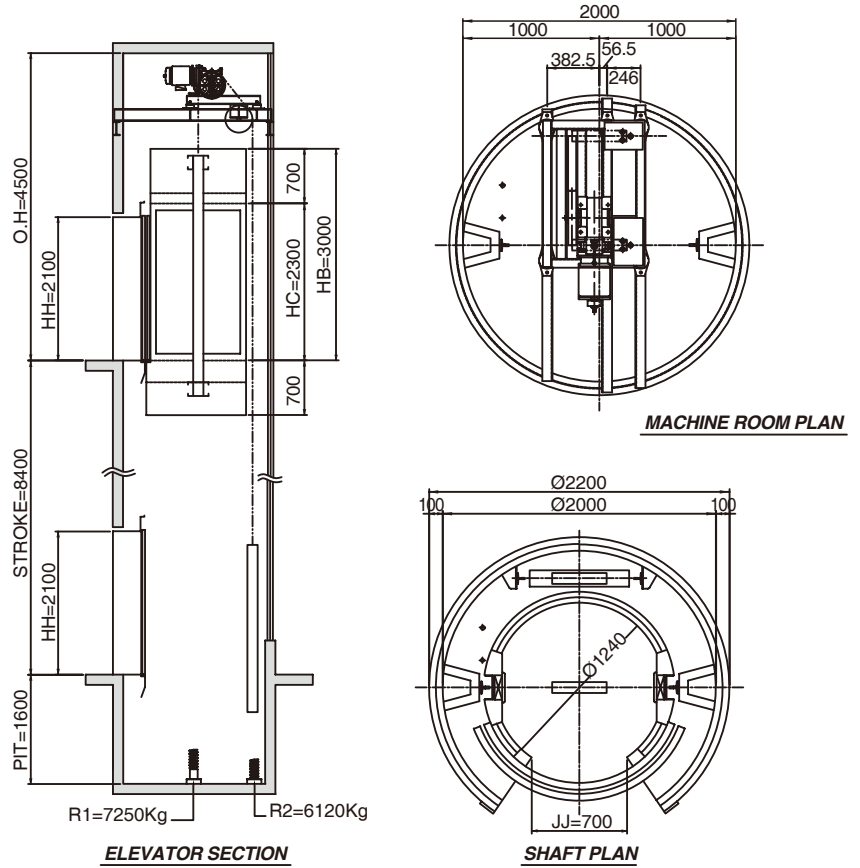


# Construction Information

## OBH寸法図 OBH Construction Drawing

### 仕様 Specification

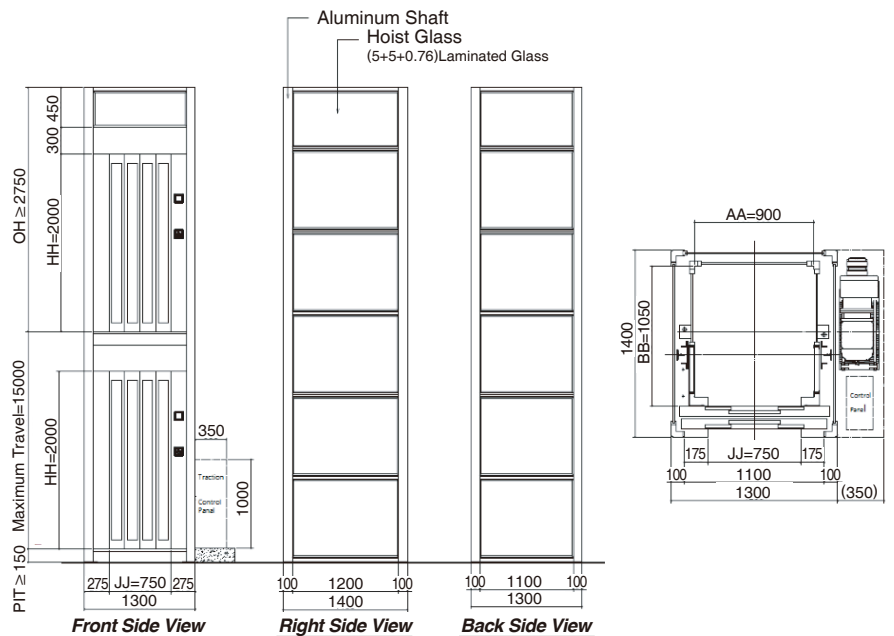
Load	■ 450KG
Speed	■ 30m/m
Door Open	■ CO
Car Internal Size	■ Ø1240, HC=2300
Entrance Width	■ JJ=700, HH=2100
Rope	■ 2:1 (Ø10*3V)
Car Rail	■ 13K
Cwt Rail	■ 8K



## G9寸法図 G9 Construction Drawing

### 仕様 Specification

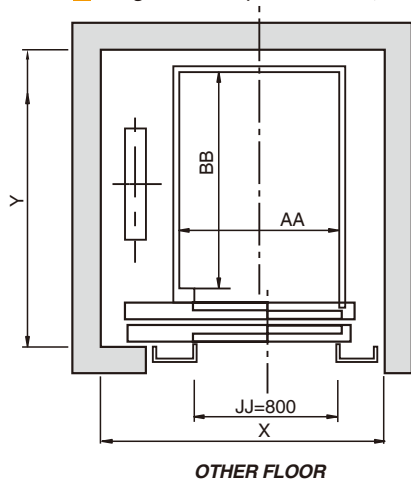
Type	■ HAL-G9
Load	■ 320KG
Speed	■ 20m/m
Max Travel	■ 15m
Max Stops	■ 5 Floors
Door Open	■ 2CO
Machine Room	■ Machine Room Less
Car Dimension	■ 900*1050*2200
Entrance	■ 750*2000
Aluminum Shaft	■ 1300*1400
OH	■ 2850
Pit	■ 150



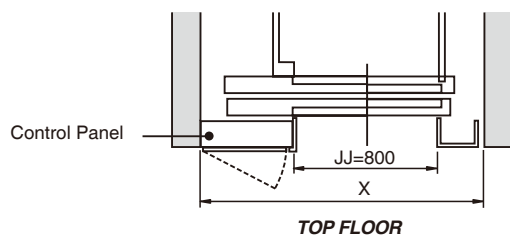
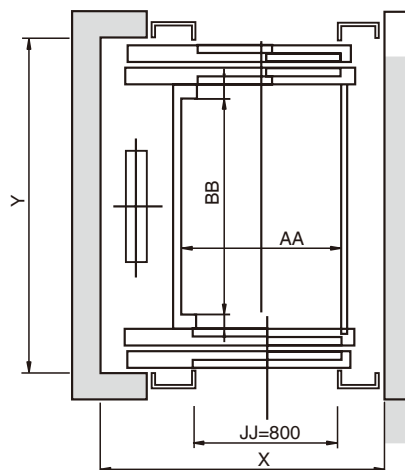
# Home Lift Construction Information

## ホームエレベーター寸法図 Home Lift Construction Drawing

■ Single Entrance (Steel structure, RC structure)



■ Double Entrance (Steel structure, RC structure)



HRC	Single Entrance (XxY)	Double Entrance (XxY)	(AAxBBxHC)
140 KG	1550x1250	1550x1450	900Wx900Dx2100H
200 KG	1550x1550	1550x1750	900Wx1200Dx2100H
320 KG			
400 KG	1600x1550	1600x1750	
450 KG			

## ホームエレベーター仕様 Specifications

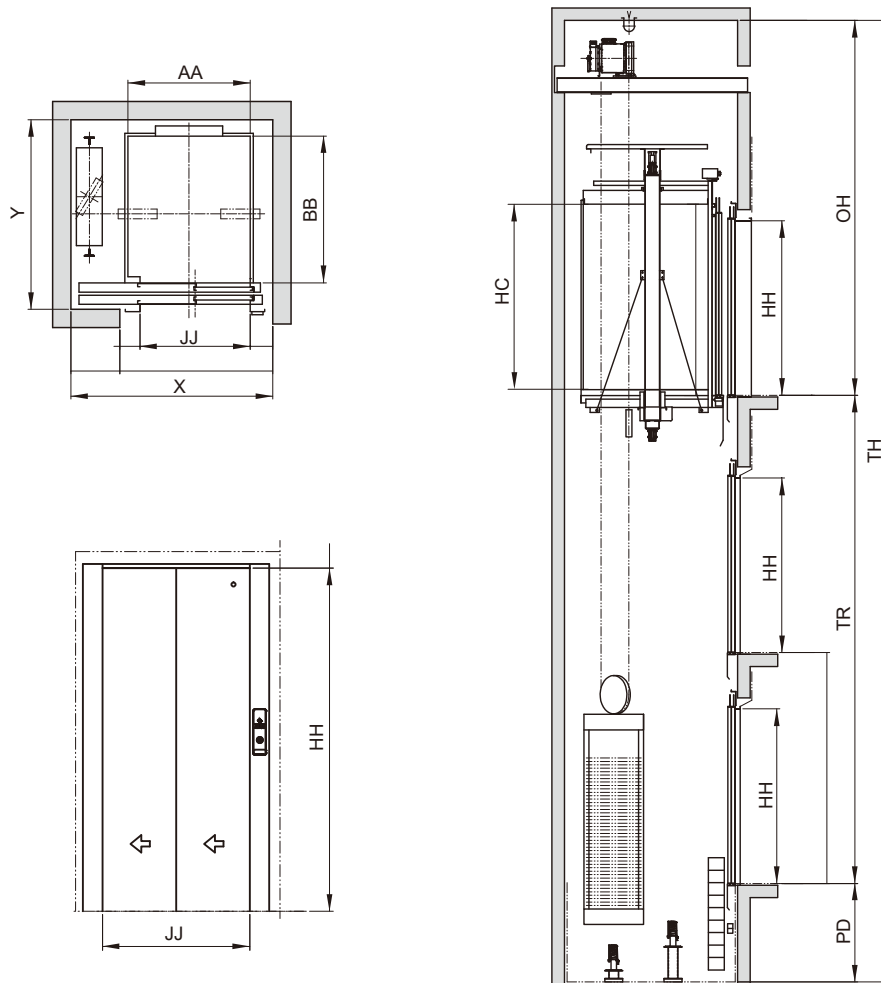
Purpose	Resident Use				
Machine Room	Machine Roomless				
Driving Type	Wire Rope				
Rated Load	2 persons (140kg)	3 persons (220kg)	4 persons (320kg)	5 persons (440kg)	6 persons (450kg)
Power	Motor	Single Phase 220V, Triple Phase 220V/380V			
	Light/Fan	110V/220V, 50Hz/60Hz			
Motor	1.5kw	1.5kw	2.2(3.0)kw	2.2(3.7)kw	3.7kw
Maximum Stop	6 stops				
Maximum Travel(R)	20 meters				
Rated Speed	20m/min		30(45)m/min		
Door Opening	2 panels side opening				
Cabin Size(mm) AAxBBxCC	900x900x2100		900x1200x2100		
Entrance Size(mm)	800x2000				
OH	3200		3200	3400	
Pit	500		700	1000	
Remark	-		For Self-Operated Wheelchair		



Layouts

# GPX Type Construction Information

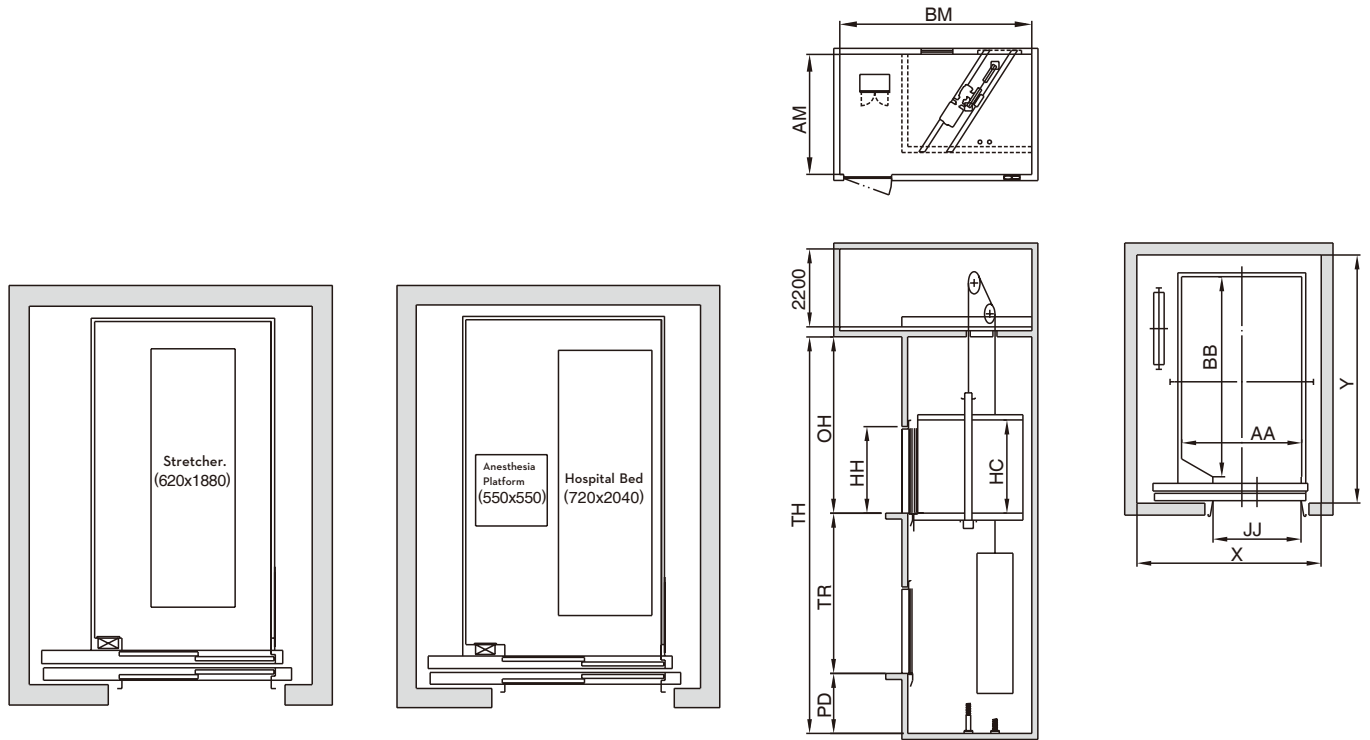
GPX寸法図 GPX Construction Drawing



GPX寸法表 GPX Specifications

TYPE	CAPACITY	SPEED	DOOR OPEN	ENTRANCE DIMENSION		CAR INTERIOR DIMENSION			HOISTWAY	
	(KGS)	m/min	TYPE	JJ	HH	AA	BB	HC	X	Y
A	450	45	2S	900	2100	1000	1200	2200	1650	1550
	550	60	2S	900	2100	1000	1400	2200	1650	1750
	630	60	2S	900	2100	1100	1400	2200	1750	1750
B	450	45	2S	900	2100	1000	1200	2200	1650	1550
	550	60	2S	900	2100	1000	1400	2200	1650	1750
	630	60	2S	900	2100	1100	1400	2200	1750	1750

寝台用エレベーター寸法図 Bed Lift Construction Drawing



寝台用エレベーター寸法表 Bed Lift Specifications

TYPE	CAPACITY (KGS)	SPEED m/min	DOOR OPEN TYPE	ENTRANCE DIMENSION		CAR INTERIOR DIMENSION			HOISTWAY		MACHINE ROOM	
				JJ	HH	AA	BB	HC	X	Y	AM	BM
B	750	45-90	2S	1100	2100	1300	2300	2300	2050	2900	2600	4600
	1000	45-90	2S	1100	2100	1500	2500	2300	2300	3100	3000	4800
EML-B	750	45-90	2S	1100	2100	1300	2300	2300	2150	2900		
	1000	45-90	2S	1100	2100	1500	2500	2300	2400	3100		
EMS-B	750	45-90	2S	1100	2100	1300	2300	2300	2050	2900	2050	2900
	1000	45-90	2S	1100	2100	1500	2500	2300	2300	3100	2300	3100

TYPE	ITEM	SPEED			
		45m/min	60m/min	90m/min	105m/min
B	OH(mm)	4200(4200)	4400(4200)	4600(4300)	4800(4500)
	PIT(mm)	1250(1350)	1550(1500)	1850(1800)	2150(1950)
EML-B	OH(mm)	3900(4200)	4100(4200)	4300(4300)	4500(4500)
	PIT(mm)	1250(1550)	1550(1550)	1800(1800)	2100(2100)
EMS-B	OH(mm)	5700(5500)	5900(5600)	6100(5700)	6300(5800)
	PIT(mm)	1250(1550)	1550(1550)	1850(1850)	2150(2100)

# 革新から満足へ

Innovation to Satisfaction.



## Japan Fuji International Co., Ltd

〒270-0144 千葉県流山市前ヶ崎5 9 9-3  
599-3, Maegasaki, Nagareyama Shi, Chiba Ken, 270-0144, Japan

E-mail : [info@fujilift.co.jp](mailto:info@fujilift.co.jp)

TEL : +81-3-45780389



安全に関するご注意  
Safety Precautions

ご使用前に取扱説明書をよくお読みのうえ、正しくお使いください。  
Read the instruction manual carefully and thoroughly before using the appliance, and then use it correctly.